

Corning Cabelcon **New Self-Install™ IEC compression connectors**

The easy and safe connection
for radio/tv home
applications



Patented design

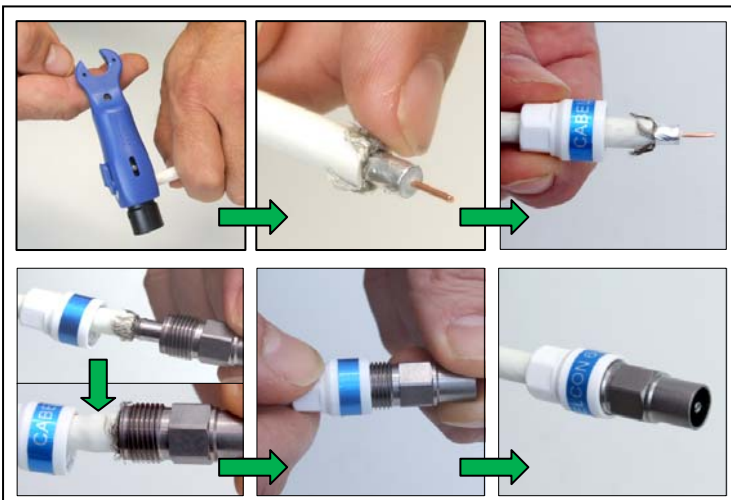
Cabelcon is now offering IEC Self-Install™, an easy-to-install connector for all radio/TV home installations.

IEC Self-Install™ is a true Cabelcon quality product, featuring the well-known Cabelcon performance capabilities and ease of installation.

- **Class A screening**
- **Nitin-6™ plated brass**
- **Operational to 3 GHz**
- **No need for compression tools**
- **Two-piece connector – no loose parts**
- **Professional quality and excellent performance**
- **Fits standard RG6 cables (connector size 4.9 + 5.1)**



Easy to install without any compression tools



Technical Data (Typical)(male)

Operational to 3 GHz	
Impedance	75 Ohm
Shielding Eff. 30 - 1000 MHz	115 dB
Transfer Imp. 5-30 MHz	5.0 mOhm/m
Return loss 0.3 - 1750 MHz (typ)	20 dB
Return loss 1750 - 3000 MHz (typ)	19 dB
IMD (3 rd order@2x100mW)	-135 dBc
IMD (IP3 value)	+87 dBm
AMP rating	cable data
Max. Tensile strength (overall)	147 N

Detailed datasheets are available on request

Ordering information

IECM-56 5.1 Self Install	99909686
IECF-56 5.1 Self Install	99909690

CABELCON
connectors